



Model: _____ Item #: _____ Date: _____
 Project: _____ Qty: _____ Approved By: _____

Royal Series Workstations

Royal Series Underbar



KR24-W42L-10

OPTIONAL ACCESSORIES

KR-101	Condiment Tray
KR-103	Stainless Steel Divider
KR-303	Left and Right End Splash
KR-311	Right End Splash
KR-310	Left End Splash
SC"XX"H	Partial Sliding Cover (*XX denotes size of Ice Bin)
SC"XX"F	Full Sliding Cover (*XX denotes size of Ice Bin)
KR-501	Towel Ring
30-160	Perforated Dump Basket
KR-806	Upgrade: 6" Longer Stainless Steel Legs

STANDARD FEATURES

Drainboard	20 gauge stainless steel
Dump Sink (Blender)	20 gauge stainless steel. 10" x 14" x 7" deep bowl with 1-1/2" drain in center
Blender Shelf	22 gauge stainless steel
Interior (Ice Bin)	20 gauge stainless steel
Cold Plate	Cast aluminum post mix plate with 10 circuits. Plate is sealed into bottom, each circuit is 5/16" OD stainless steel tubing. Two full with remainder to be half circuits. Bump and swedge fittings on ends
Front Apron	20 gauge stainless steel clad over 20 gauge galvanized steel
Backsplash	20 gauge stainless steel
Back & Bottom	20 gauge stainless steel
Legs	1-5/8" tubular 16 gauge stainless steel with grey plastic bullet foot
Tubing Access (Cold Plate)	3/4" x 3-1/2" cutout in left side of backsplash
Electrical (Blender)	Duplex outlet located underneath Blender Shelf
Insulation (Ice Bin)	Foamed-in-place polyurethane
Plumbing	Hot/Cold Water: 1/2" IPS Cold Plate: 1/2" IPS drain connection No Cold Plate: 1" IPS drain connection Drainboard: 1" IPS drain connection Dump Sink: 1-1/2" IPS drain connection
Faucet	4" center wall or deck mount faucet with 1/2 turn ceramic cartridge valves
Side Splash	Included when Ice Bin is adjacent to Blender Dump Sink



Conforms to NSF St. 2



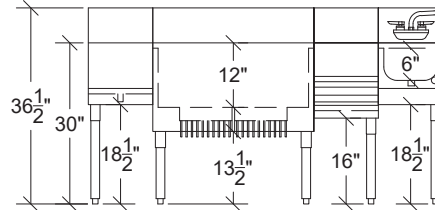
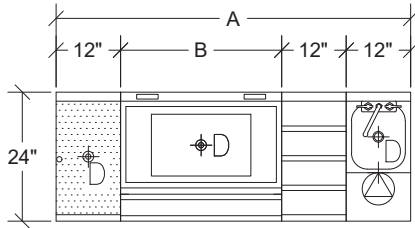
Model: _____ Item #: _____ Date: _____

Project: _____ Qty: _____ Approved By: _____

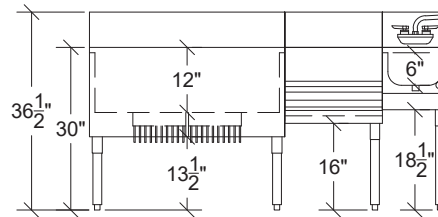
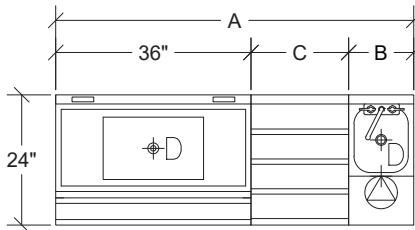
Royal Series Workstations

Royal Series Underbar

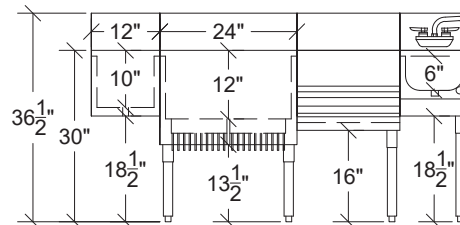
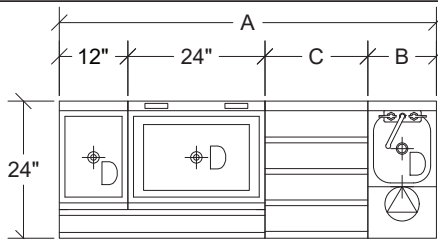
Model Numbers	Overall Length Ⓐ	Ice Bin Length Ⓑ	Blender Length	Drainboard Length	Liquor Display Length	Cold Plate Circuits	Weight (lbs.)
KR24-W60C-10	60"	24"	12"	12"	12"	10	262
KR24-W66C-10	66"	30"	12"	12"	12"	10	289
KR24-W72C-10	72"	36"	12"	12"	12"	10	312



Model Numbers	Overall Length Ⓐ	Ice Bin Length	Blender Length Ⓑ	Liquor Display Length Ⓒ	Cold Plate Circuits	Weight (lbs.)
KR24-W60D-10	60"	36"	12"	12"	10	273
KR24-W66D-10	60"	36"	12"	18"	10	302
KR24-W72D-10	72"	36"	18"	18"	10	330



Model Numbers	Overall Length Ⓐ	Ice Bin Length	Blender Length Ⓑ	Liquor Display Length Ⓒ	Cold Plate Circuits	Weight (lbs.)
KR24-W60E-10	60"	36"	12"	12"	10	304
KR24-W66E-10	66"	36"	12"	18"	10	337
KR24-W72E-10	72"	36"	18"	18"	10	369



Conforms to NSF St. 2