

N8100BP

Drop-In Self-Contained Mechanically Cooled Cold Pans

Project _____
 Item _____
 Quantity _____
 CSI Section 11400
 Approved _____
 Date _____

N8100BP: Drop-In Self-Contained Mechanically Cooled Cold Pans

Models

- N8118BP 18" mechanically cooled cold pan
- N8130BP 30" mechanically cooled cold pan
- N8143BP 43" mechanically cooled cold pan
- N8156BP 56" mechanically cooled cold pan
- N8169BP 69" mechanically cooled cold pan
- N8181BP 81" mechanically cooled cold pan



N8156BP

Standard Features

- Integral V-stamped pan rest
- 20-gauge stainless steel top construction
- 2 BF stainless steel interior liner wrapped and spot clipped with refrigeration lines; thermal transfer compound is applied for superior cooling
- Adapter bars are provided standard for 12" x 20" openings
- Standard 1" plastic drain
- High density Environmentally friendly, Kyoto Protocol Compliant, Non ODP (Ozone Depletion Potential), Non GWP (Global Warming Potential) polyurethane foam insulation throughout unit
- Galvanized exterior body
- Non-marring press fit top gasket
- Condensing unit is suspended below on a 16-gauge galvanized frame
- R290 refrigerant
- 8' cord and plug
- Stainless steel louver provided for field installation
- 1 year parts and labor standard warranty

Options & Accessories

- Custom sizes and styles
- Single or double service flip-up sneezeguards
- Relocate compressor
- 220V/50 cycle electrical available in 404a custom sku# version
- Remote toggle switch assembly (shipped loose) (AS000-473-003W)
- * Inclusion of this option will alter the electrical specifications of the unit

Specifications

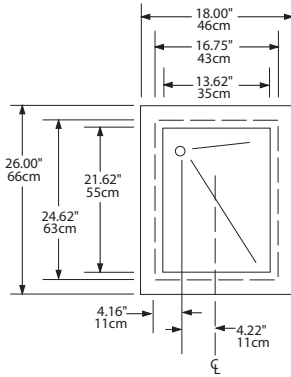
Top is one-piece 20-gauge stainless steel. Interior liner is 22-gauge stainless steel and is creased to a 1.00" (2.5cm) diameter drain. Integral V-stamped pan rest recessed 2" (5cm) to accommodate 12" x 20" (30cm x 51cm) pans 4" (10cm) or 6" (15cm) deep supplied by others. Product temperatures of 33°F (1°C) to 41°F (5°C) are maintained at 86°F (29°C) ambient room temperature, meeting NSF 7 requirements. Adapter bars for 12" x 20" (30cm x 51cm) pans are standard.

Sides are wrapped with refrigeration lines. Sides and bottom are fully insulated with high-density environmentally friendly, Kyoto Protocol Compliant, Non ODP (Ozone Depletion Potential), Non GWP (Global Warming Potential) closed-cell polyurethane. Exterior housing is 24-gauge galvanized steel.

Condensing unit is suspended below the cold pan on a 16-gauge steel frame and uses R290 refrigerant. Electronic temperature control. Unit has an 8' (2.4m) cord and NEMA 5-15P plug.

A stainless steel louver is provided for field installation; cutout dimension is 12" x 23.5" (30cm x 60cm).

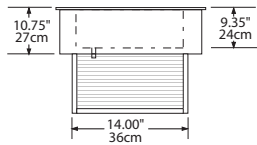




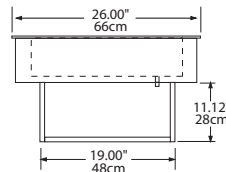
Plan View, N8118BP

Drain Location If Facing Service Side:

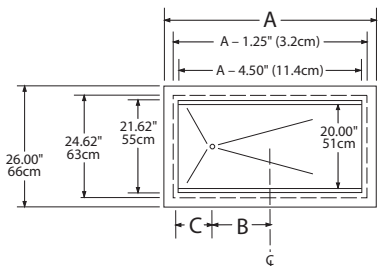
- N8118BP - back
- All Other N8100BP Models - left



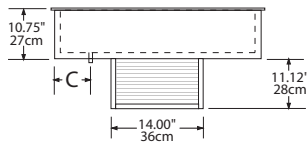
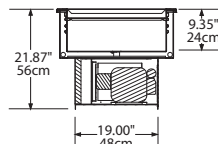
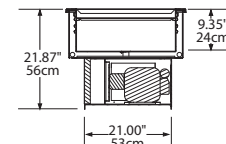
Elevation View, N8118BP



Right End View, N8118BP


 Plan View
N8100BP Models Except N8118BP

| Dimension Chart | | | |
|-----------------|----------------|--------------|---------------|
| Model | A | B | C |
| N8130BP | 30.75" (78cm) | 8.75" (22cm) | 6.00" (15cm) |
| N8143BP | 43.50" (110cm) | 9.82" (25cm) | 11.31" (29cm) |
| N8156BP | 56.25" (143cm) | 9.82" (25cm) | 17.69" (45cm) |
| N8169BP | 69.00" (175cm) | 9.82" (25cm) | 24.06" (61cm) |
| N8181BP | 81.75" (208cm) | 9.82" (25cm) | 30.43" (77cm) |


 Elevation View
N8100BP Models Except N8118BP

 Right End View
N8130BP, N8143BP, N8156BP

 Right End View
N8169BP & N8181BP

| Specifications | | | | | | | | | |
|----------------|-----------------------------------|----------------------|----------|------|------|-----------|----------|-----------------|--------------|
| Model | Counter Cutout Dimensions | 12"x20" Pan Capacity | V/Hz/Ph | Amps | H.P. | Nema Plug | BTU Load | System Capacity | Ship Weight |
| N8118BP | 17.00" X 25.00" (43cm X 64cm) | 1 | 115/60/1 | 2 | 1/6 | 5-15P | 230 | 675 | 103lbs/46kg |
| N8130BP | 29.75" x 25.00" (76cm x 64cm) | 2 | 115/60/1 | 2 | 1/6 | 5-15P | 346 | 741 | 161lbs/72kg |
| N8143BP | 42.50" X 25.00" (108cm x 64cm) | 3 | 115/60/1 | 3.1 | 2/7 | 5-15P | 661 | 1143 | 184lbs/83kg |
| N8156BP | 55.25" x 25.00" (140cm x 64cm) | 4 | 115/60/1 | 3.1 | 2/7 | 5-15P | 877 | 1255 | 233lbs/105kg |
| N8169BP | 68.00" X 25.00" (173cm x 64cm) | 5 | 115/60/1 | 3.1 | 2/7 | 5-15P | 1092 | 1346 | 243lbs/109kg |
| N8181BP | 80.75" x 25.00" (205cm x 64cm) | 6 | 115/60/1 | 4.6 | 1/3 | 5-15P | 1631 | 1831 | 260lbs/117kg |

Welbilt reserves the right to make changes to the design or specifications without prior notice.