

PORTABLE GRILLS

Perfect for catering and rental applications, our Portable Grills are stackable for easy storage and transport.

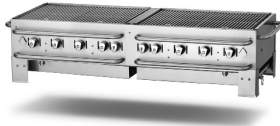
36"
PCB-36



Cooking Surface: 34" L x 21" D
Dimensions: 42 1/4" L x 26 1/2" D x 15 3/4" H
Actual Weight: 107 lbs
Shipping Weight: 192 lbs
Burners: 5
BTUH: 79,500

PCB-36-LP

60"
PCB-60



Cooking Surface: 58" L x 21" D
Dimensions: 66 1/2" L x 26 1/2" D x 15 3/4" H
Actual Weight: 171 lbs
Shipping Weight: 269 lbs
Burners: 8
BTUH: 129,000

PCB-60-LP

TB-36
TB-60



TB-36
Dimensions: 37 1/2" L x 24" D x 22 1/4" H
Actual Weight: 50 lbs
Shipping Weight: 95 lbs
TB-60
Dimensions: 52 1/2" L x 24" D x 22 1/4" H
Actual Weight: 65 lbs
Shipping Weight: 125 lbs

TB-36

TB-60

Note: Legs are removable and table is stackable

CHARCOAL GRILL

60"
BM-60



Cooking Surface: 60" L x 24" D
Dimensions: 72" L x 24" D x 31" H
Actual Weight: 127 lbs
Shipping Weight: 184 lbs

BM-60

BMC
Cover



- High heat finish
- Adjustable nickel plated cooking grate
- Removable legs with casters
- 14 gauge cold rolled steel

For all accessories, see pages 15 – 18.
 For all parts, see pages 19 and 21.

Note: Please specify natural gas or propane when ordering. All gas units shipped c/w hose and regulator(s), except built-in units, which are shipped with regulator only.